

Important Decisions...

Professional Actions!

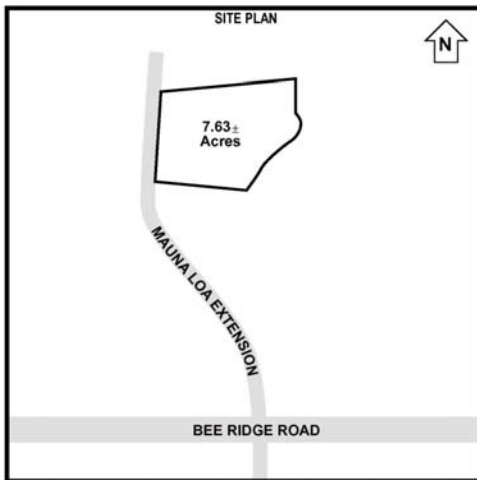


AL DUMAS & TEAM
 Email: al@aldumas.com
 Website: www.aldumas.com

RE/MAX PROPERTIES

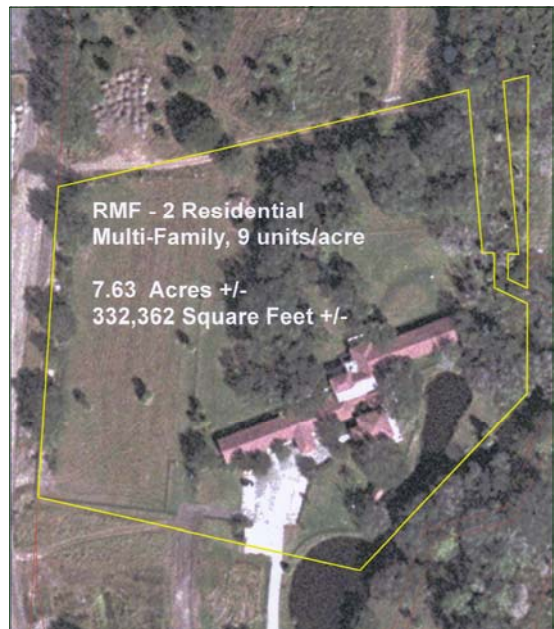


1-941-954-5454 Office
 1-800-269-1112 Toll Free
 1-941-954-5455 Fax



\$5,500,000

SPECIFICATIONS	
Address ...	6331 Bee Ridge Road Sarasota, FL 34241
Zoning.....	RMF-2
Land Size.....	7.63 Acres±
Electric.....	Available
Water/Sewer.....	Available



**7.63 +/- Acre Residential Multifamily Site
 Easy Access to I-75**

Acreage Zoned RMF-2

Allows Multifamily, 9 Units per Acre for up to 68 condos or up to 272 beds with expansion of existing dependent living facility

Site Plan is Part of the Master Plan

All Utilities available-includes gas, electric, water & sewer

Existing dependant living facility currently being operated on site in a 16,000 SF facility

Al Dumas

RE/MAX Properties, 2000 Webber St. Sarasota, FL 34239

Direct: 941-316-6573 • Fax: 941-316-6535

E-mail: al@aldumas.com



Each office independently owned and operated